



KEY



Process stage



Process stage described in narrative



Process external to this document



Decision

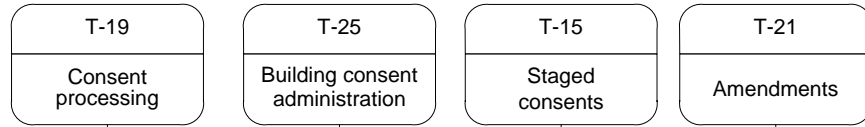


BCA function

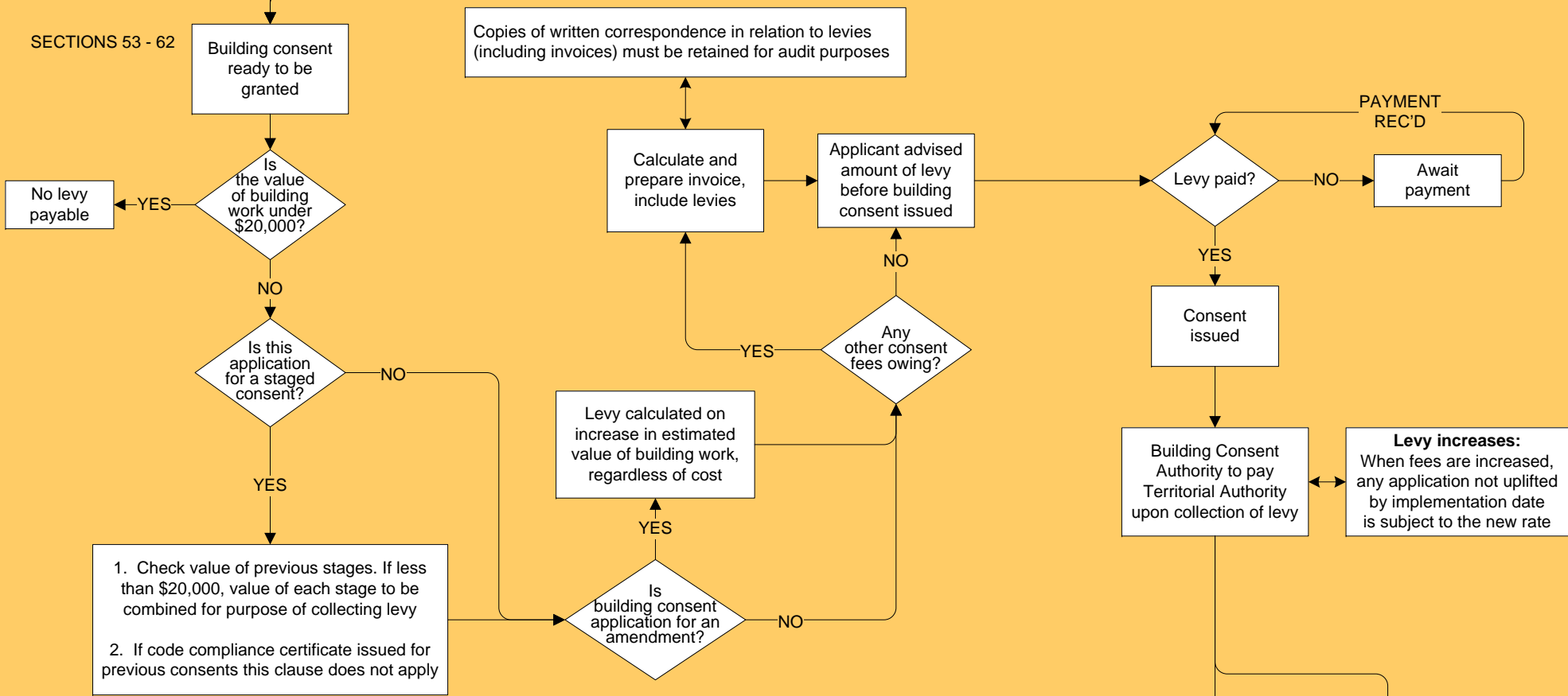


TA function

INPUTS



DEPARTMENT OF BUILDING AND HOUSING LEVIES



OUTPUTS

Levy calculated on estimated value of building work. Levy = \$1.97 per \$1000. Building costs can be checked by multiplying the square floor area based on figures supplied in Building Economist or Department of Building and Housing Guidelines

Territorial authority to forward payment of levy to Department of Building and Housing 20th day of month following the month building consent issued

