

TLA Heritage Functions

Regulatory

Requirement to give effect to the RMA (S31.)

Christchurch City Plan + Banks Peninsula District Plan

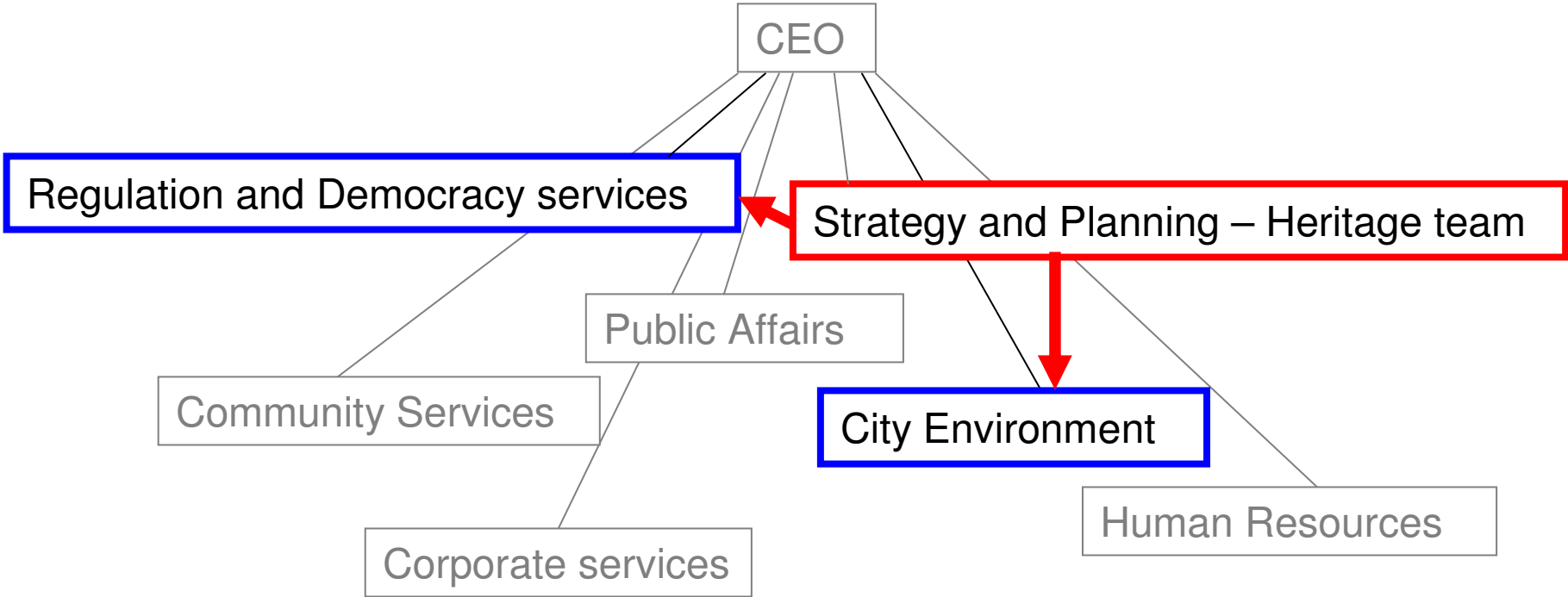
LGA – LTCCP/Annual Plan

Non-Regulatory

Heritage Conservation Policy / Heritage Strategy



CCC Structure



“Sticky issues” and Challenges for TLAs



The Heritage Profession

- Lack of heritage education offered in NZ
- Small pool of heritage consultants
- Lack of heritage expertise in many TLAs
- Heritage experts lacking in RMA planning understanding



“Sticky Issues”

'Standards'

- No national standards (NPS)
- ICOMOS NZ Charter accepted in Environment Court ✓
- Guidance - Quality Planning website /MFE RMA guidelines/ NZHPT Historic Heritage Guidance Series
- Tension between HPA + RMA approaches



“Sticky Issues”

CCC 'Standards'

- Meeting RMA transparency, certainty and rigorousness
- Lessons learnt - case law / Environment Court
- S6
- Plan change - Issues and Options / s32
- Directive plan provisions
- Definitions
- Heritage identification and assessment
- Assessment matters – interpreting conservation principles
- Conservation Plans – changing perspectives



“Sticky Issues”

TLA Heritage Support

- Lacking at the regional and national levels
- RPS – does not assist CCC heritage function
- MFE – Quality Planning website - minimal
- MFE/NZHPT 2007 workshop – follow up?
- NZHPT advice – not coming from TLA/RMA perspective
- Overlap between national agencies and roles



“Sticky Issues”

TLAs and Advocacy

- Community expectations and consultation
- Role of central government agencies?
- Strategic alignment of stakeholders needed
- Pre-application advice
- Heritage Week



“Sticky Issues”

Discussion

Can we work more strategically across agencies for heritage protection *and make life easier at the “sharp end of the stick”?*

Can national bodies co-ordinate to inform TLAs in a more effective way?



Opportunities?

- Supplement Heritage Planners Forum with national forum - focus group of senior professionals? – LGNZ?
- Development of non-statutory standards for TLAs?
- Improved interagency collaboration from local to national level?
- National heritage education and advocacy?

