

# Where to from here?

- Complete Wellington City
- Update Hamilton
- Refine method
  - Extreme events
- Partner with NIWA & CLIMFACTS?
- Other councils/utility owners?

# Take home messages

1. Climate change is bigger than steroids
2. Climate impacts on infrastructure; climate changes may increase impacts
3. Infrastructure managers must consider climate change
4. CLINZI = climate's long-term impact on NZ infrastructure
5. Integrated assessments are essential

# The New Zealand Centre for Ecological Economics

- Joint venture

- Opened April 2004



- Interdisciplinary team:

- Prof Patterson (Director); Jollands (Principal); Cole; Andrew; Golubiewski; Forgie.

- MEL: McDonald; McGregor

- [www.nzcee.org.nz](http://www.nzcee.org.nz)

# Key research issues

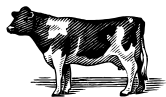
- **Sustainable urban systems**

- How do cities use energy and materials?
- Is it important to know this?



- **Sustainable primary production**

- What is the environmental impact of New Zealand agriculture?



- **Ecosystem services**

- What is the value of New Zealand's ecosystem services?
- What is the most appropriate design for ecosystem service markets?



- **Climate change**

- Is New Zealand's infrastructure vulnerable?
- What are the social/economic impacts?



# Current programme

## Sustainable urban systems

- Sustainable pathways

## Sustainable primary production

- Ecological footprint plus

## Ecosystem services

- Ngati Raukawa

## Climate change

- CLINZI
- Socio-economic aspect of GHG programme

