

# Adaptation to Climate Change

Julie King and Katie Andrews-Cookson  
Ministry for the Environment

Local Government New Zealand Workshops on  
Adapting to Climate Change - May 2006



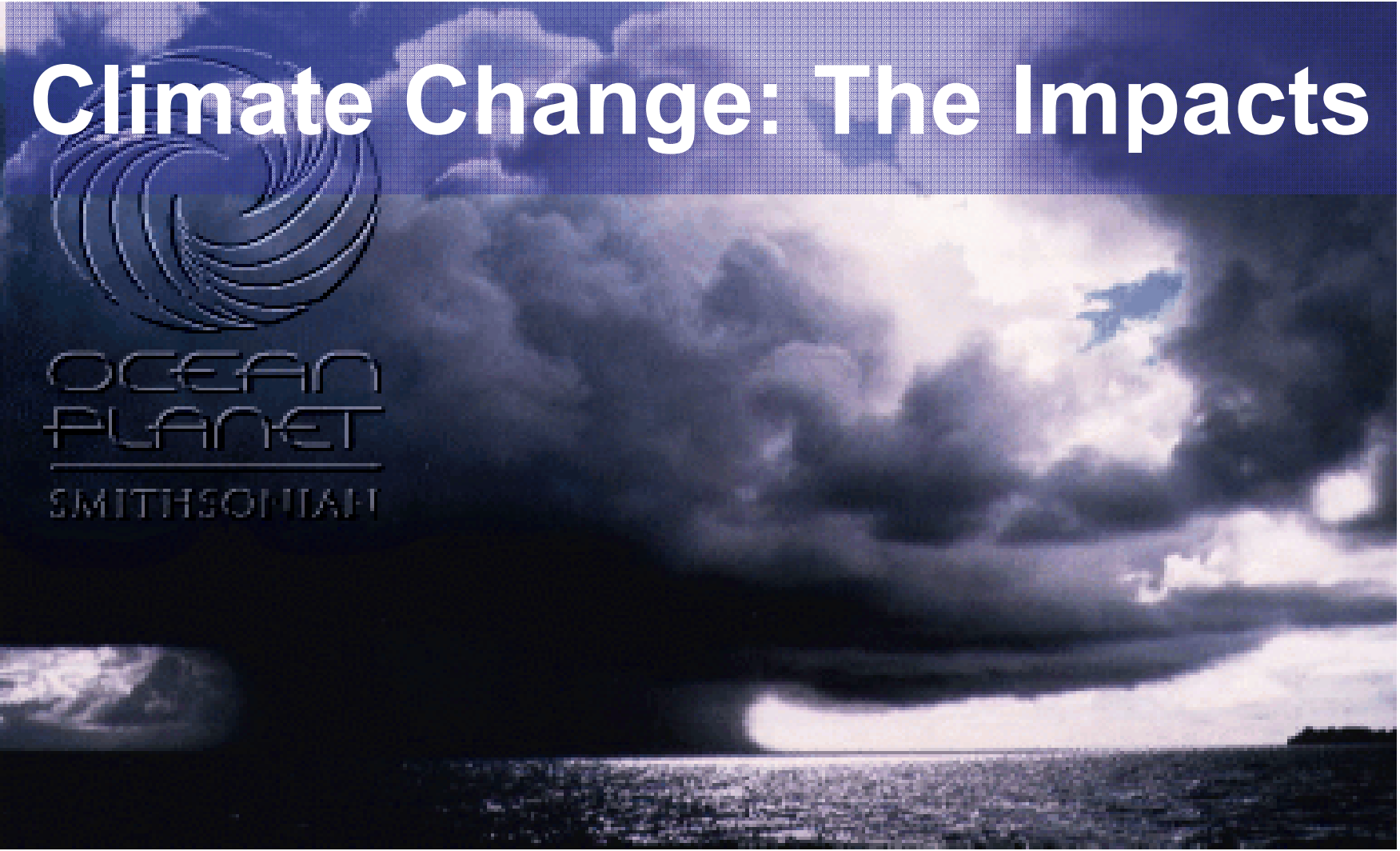
Ministry for the  
**Environment**  
*Manatū Mō Te Taiao*



# Climate Change: The Impacts



OCEAN  
PLANET  
SMITHSONIAN



Ministry for the  
**Environment**  
*Manatū Mō Te Taiao*



# Climate Change Impacts: Global picture by 2100

- Average global temperature increase between 1.4 and 5.8 °C
- Changes in rainfall up to 20% - increase or decrease
- Global mean sea level rise (9 to 88 cm)
- Change in means → change in extremes
- **NB:** This is not a prediction on exactly what *will* happen. These figures are an indication of the *likely changes*, based on scenarios & projections by the IPCC



Ministry for the  
**Environment**  
*Manatū Mō Te Taiao*



# Climate Change Impacts: NZ regional

- Greater temperature increases in winter (difference summer-winter expected to decrease)
- Greater temperature increases in north (difference north-south expected to increase)
- Drier in east, wetter in west (difference east-west expected to increase)
- Increased frequency & severity of storms, floods, droughts



# What will these changes mean?

Climate change to increase risks to New Zealand:

- Agricultural/forestry pests and diseases
- Water shortages, droughts;
- Flooding
- Higher temperatures to affect crops
- Heavy rainfall to put pressure on drainage and stormwater systems.
- Biodiversity losses – some species will fail to adjust to a changing climate/habitat – management of natural ecosystems



Ministry for the  
**Environment**  
*Manatū Mō Te Taiao*



# Adaptation: our response to climate change



Ministry for the  
**Environment**  
*Manatū Mō Te Taiao*

