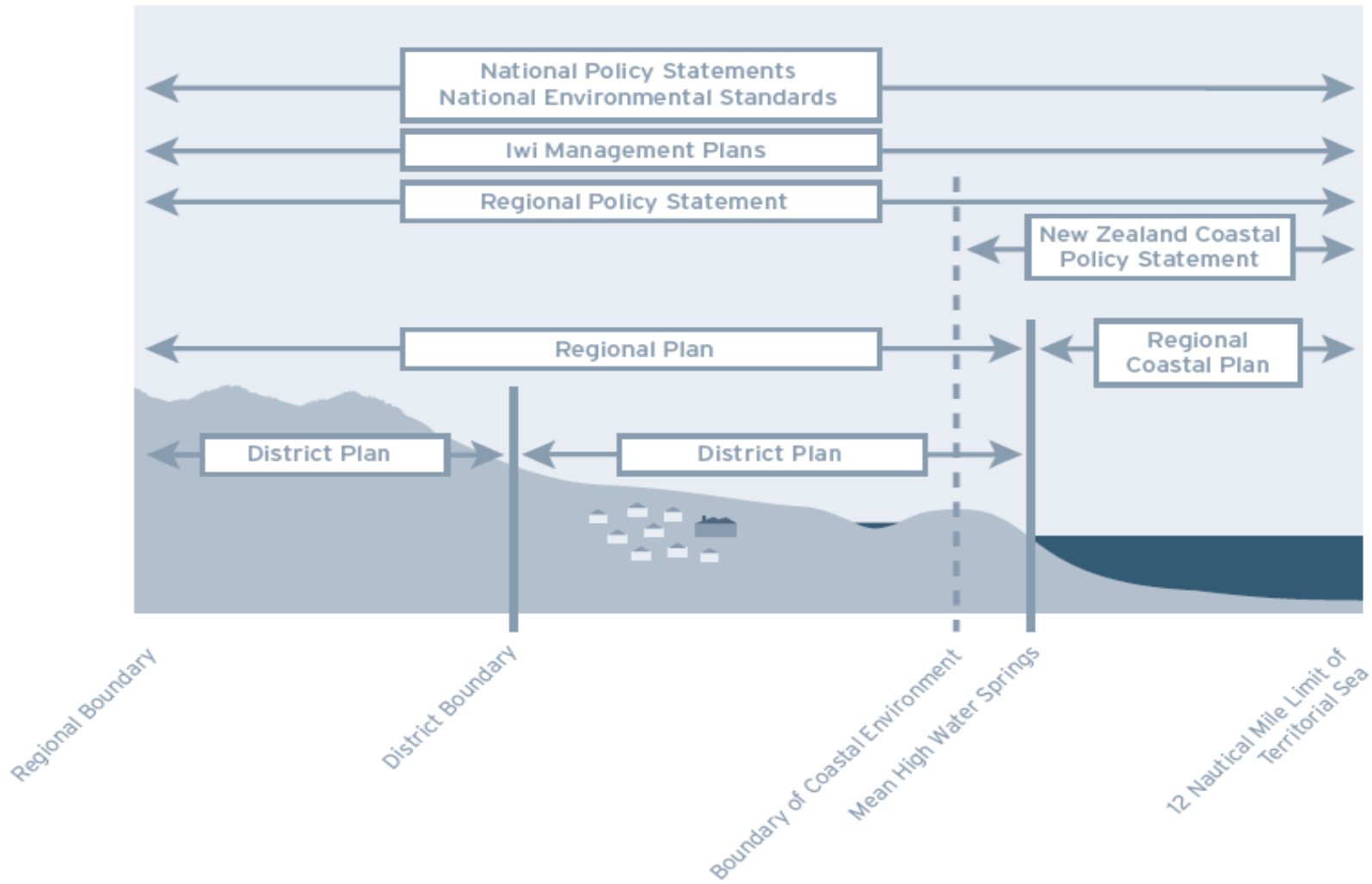


Regional Policy Statement for the Wellington region

Second Generation

Role of RPS



Review process



1995 → 2005 → 2006 → 2007 → 2008 → 2009

Evaluation of existing RPS



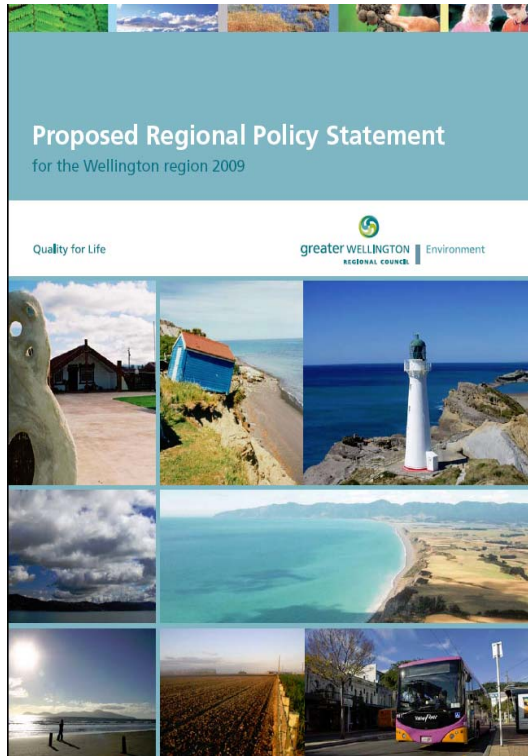
- Little progress towards objectives/outcomes sought
- Where progress had been made it was often nothing to do with the RPS
- Told that most policies were not specific enough to be helpful with plan or resource consent decision making

Communication & consultation

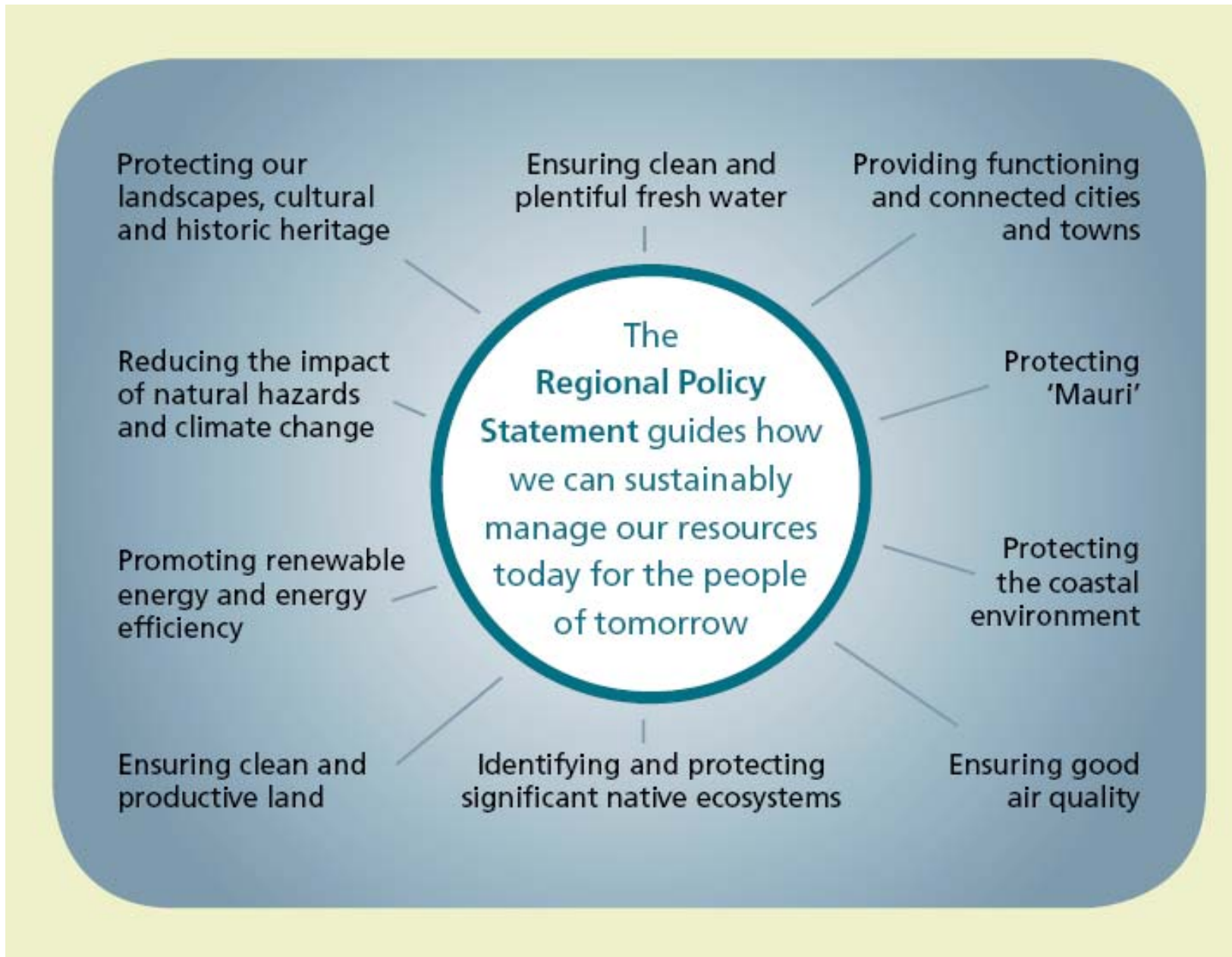


- Our philosophy: Regional document not a regional council document!
- Ongoing communication with city and districts and iwi authorities was essential.
- Draft useful – but still struggled to get feedback from some key stakeholders until proposed RPS was released

Proposed RPS



- Different layout
- Developed to add value, rather than repeat the RMA, NZCPS, etc
- Fewer and more targeted issues, objectives, policies and methods
- Greater focus on directing plans
- Different style of policies. Either:
 - Direct plans to make changes to address specified matters;
 - State matters to be considered when making plan or resource consent decisions; or
 - State other *non regulatory* actions needed over the next 10 years



Difference between 1995 and 2009 RPS

Example: Regional form, design and
function

www.gw.govt.nz/rps