

# LGNZ Conference MfE update

Sue Powell  
July 09

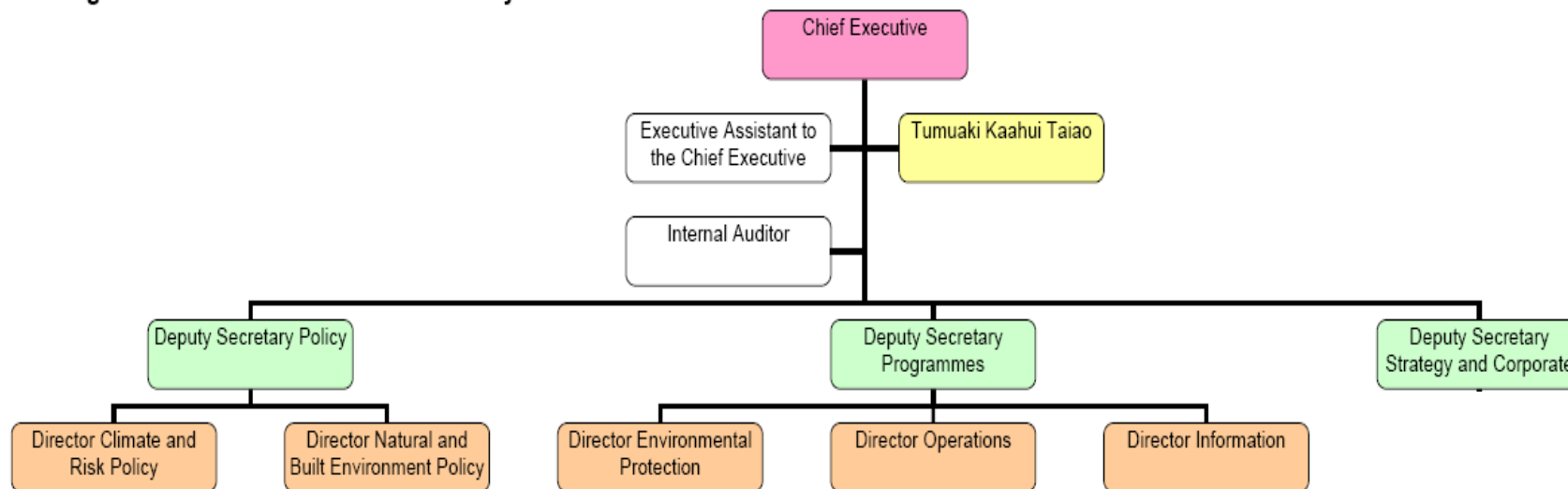


Ministry for the  
**Environment**  
*Manatū Mo Te Taiao*



# MfE Structure

MfE organisational structure effective 1 July 2009



Ministry for the  
**Environment**  
*Manatū Mo Te Taiao*



# Chief Executive & Secretary for the Environment



Ministry for the  
**Environment**  
*Manatū Mo Te Taiao*



# Tumuaki



Ministry for the  
**Environment**  
*Manatū Mo Te Taiao*



# Deputy Secretary Programmes



Ministry for the  
**Environment**  
*Manatū Mo Te Taiao*



# Programme Directors



Ministry for the  
**Environment**  
*Manatū Mo Te Taiao*



# Programme Managers



Ministry for the  
**Environment**  
*Manatū Mo Te Taiao*



# Policy Division



Ministry for the  
**Environment**  
*Manatū Mo Te Taiao*



# RMA Reform

- Phase 1
- Phase 2
- Environmental Protection Authority



Ministry for the  
**Environment**  
*Manatū Mo Te Taiao*



# Land Use and Carbon Accounting System (LUCAS)

lucas@mfe.govt.nz

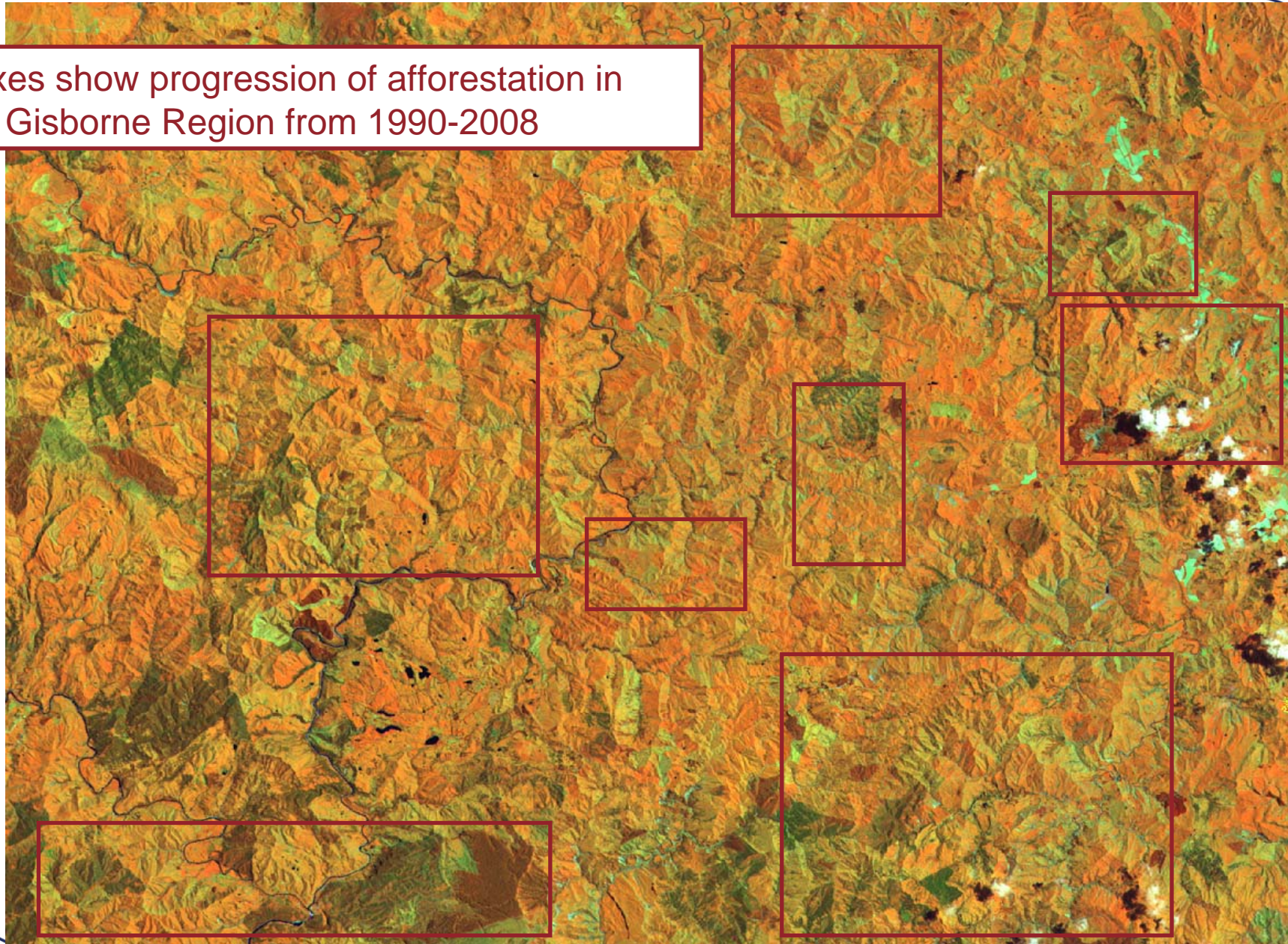


Ministry for the  
**Environment**  
*Manatū Mo Te Taiao*



## Landsat 4 1990 Imagery- Located in Gisborne Region

Boxes show progression of afforestation in the Gisborne Region from 1990-2008



## SPOT 5 2008 Imagery- Located in Gisborne Region

Boxes show progression of afforestation in the Gisborne Region from 1990-2008

