



Second Generation Plans

**Pere Hawes
Environmental Policy Team Leader**





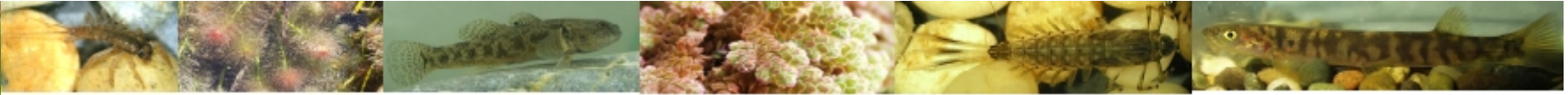
Marlborough Planning Environment

- Unitary authority
- Operative RMA planning framework
- Marlborough RPS
- Two resource management plans
 - Regional coastal plans, regional plans and district plans
- Currently reviewing framework



Marlborough Environment





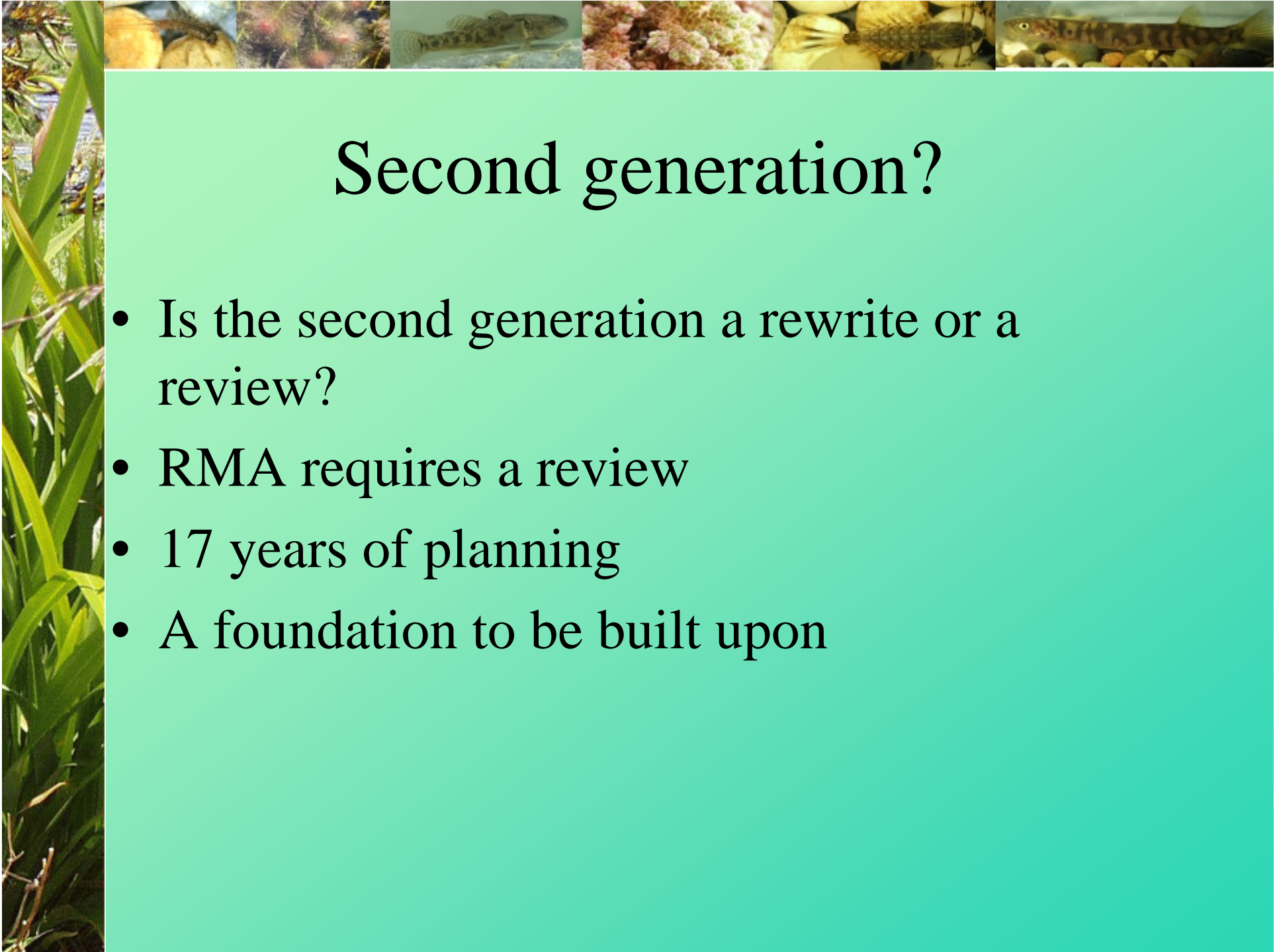
Marlborough Environment





Marlborough Environment





Second generation?

- Is the second generation a rewrite or a review?
- RMA requires a review
- 17 years of planning
- A foundation to be built upon



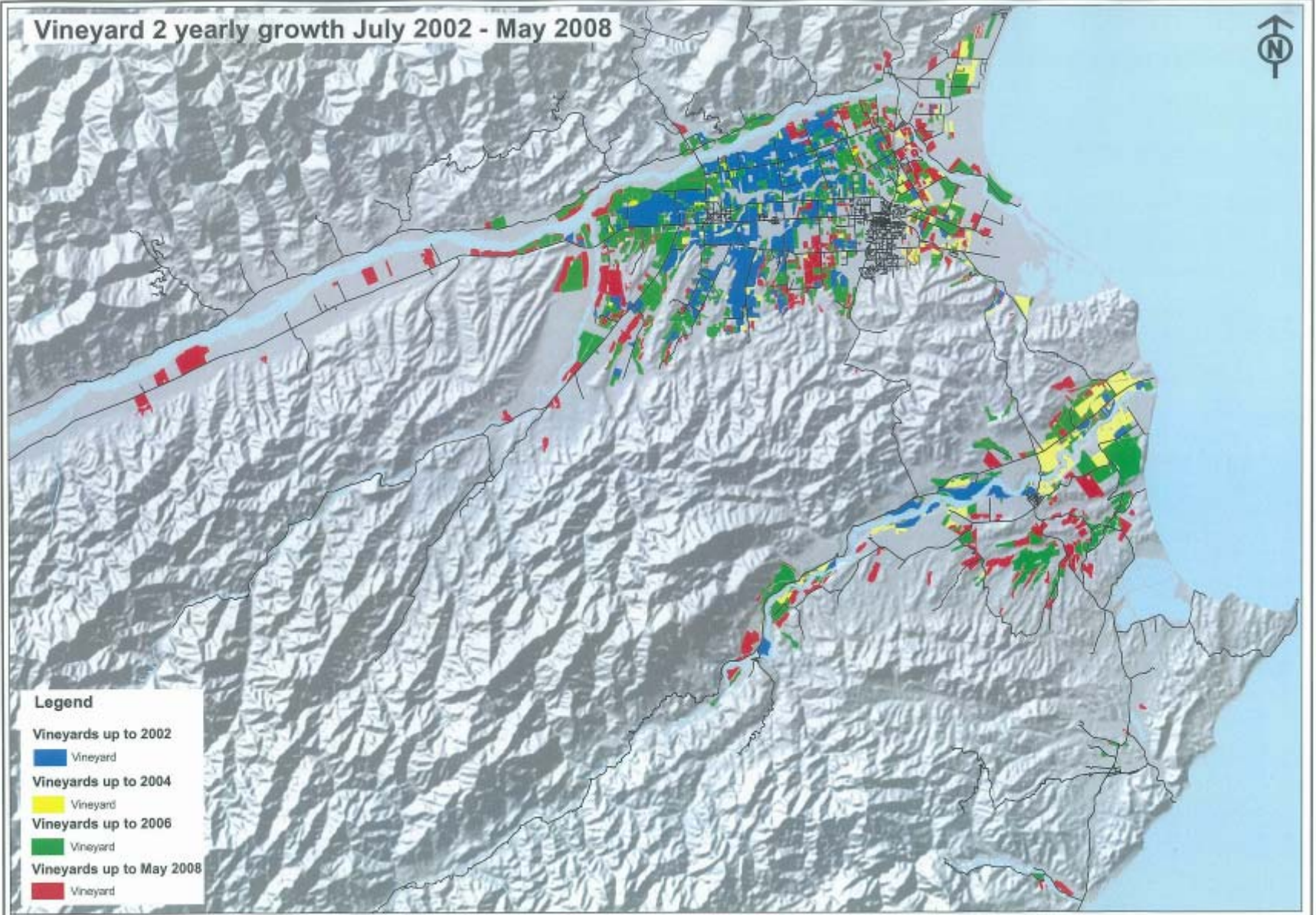
Review - Context

- District plans have guided land use
- Coincided with period of economic growth
- Dramatic changes in local environments
- Marlborough: Growth in viticulture





Vineyard 2 yearly growth July 2002 - May 2008

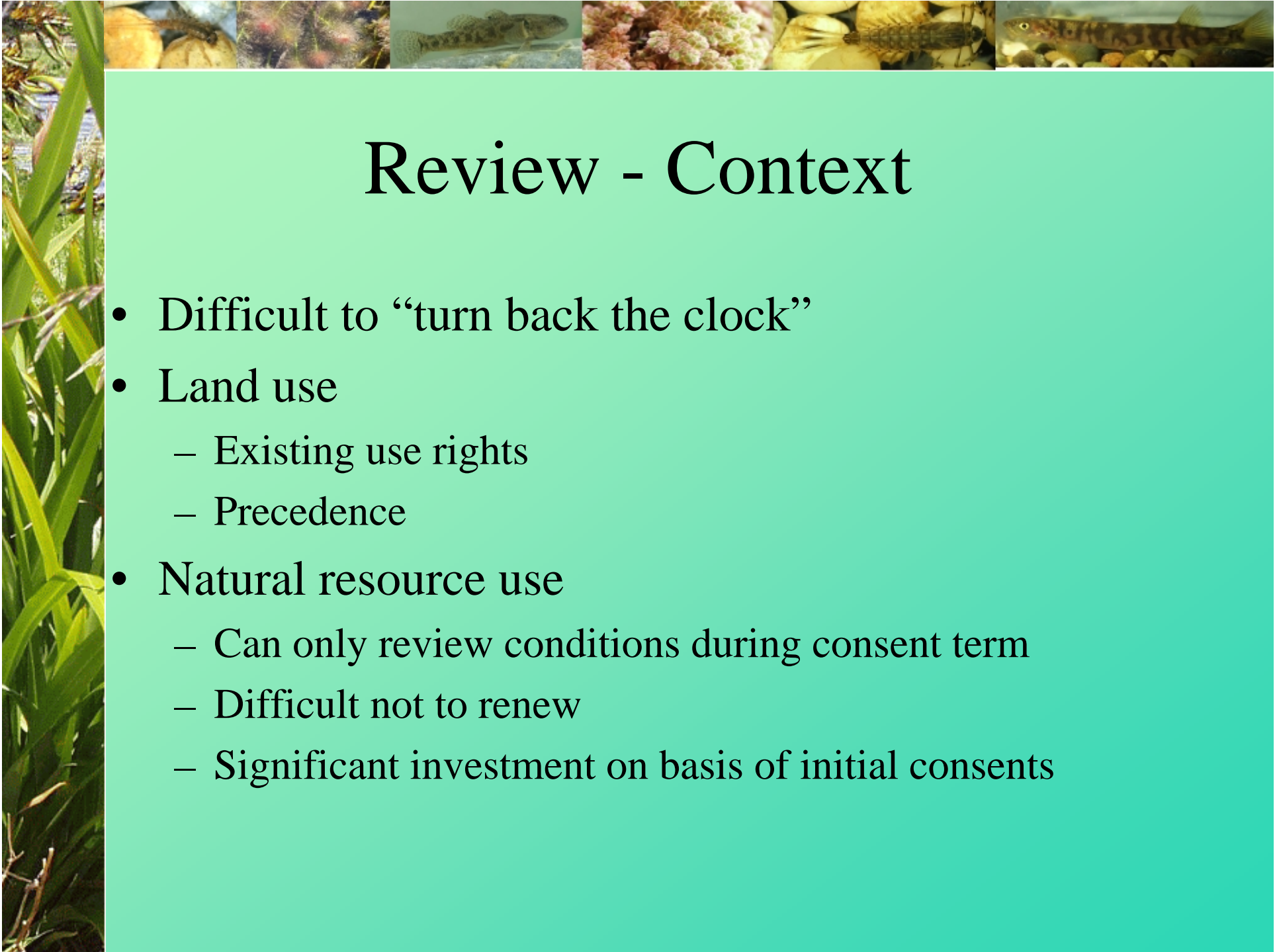




Review - Context

- Regional plans have allocated public resources
 - Water for out of stream use
 - Water and air as receiving environments
 - Coastal space for aquaculture and structures





Review - Context

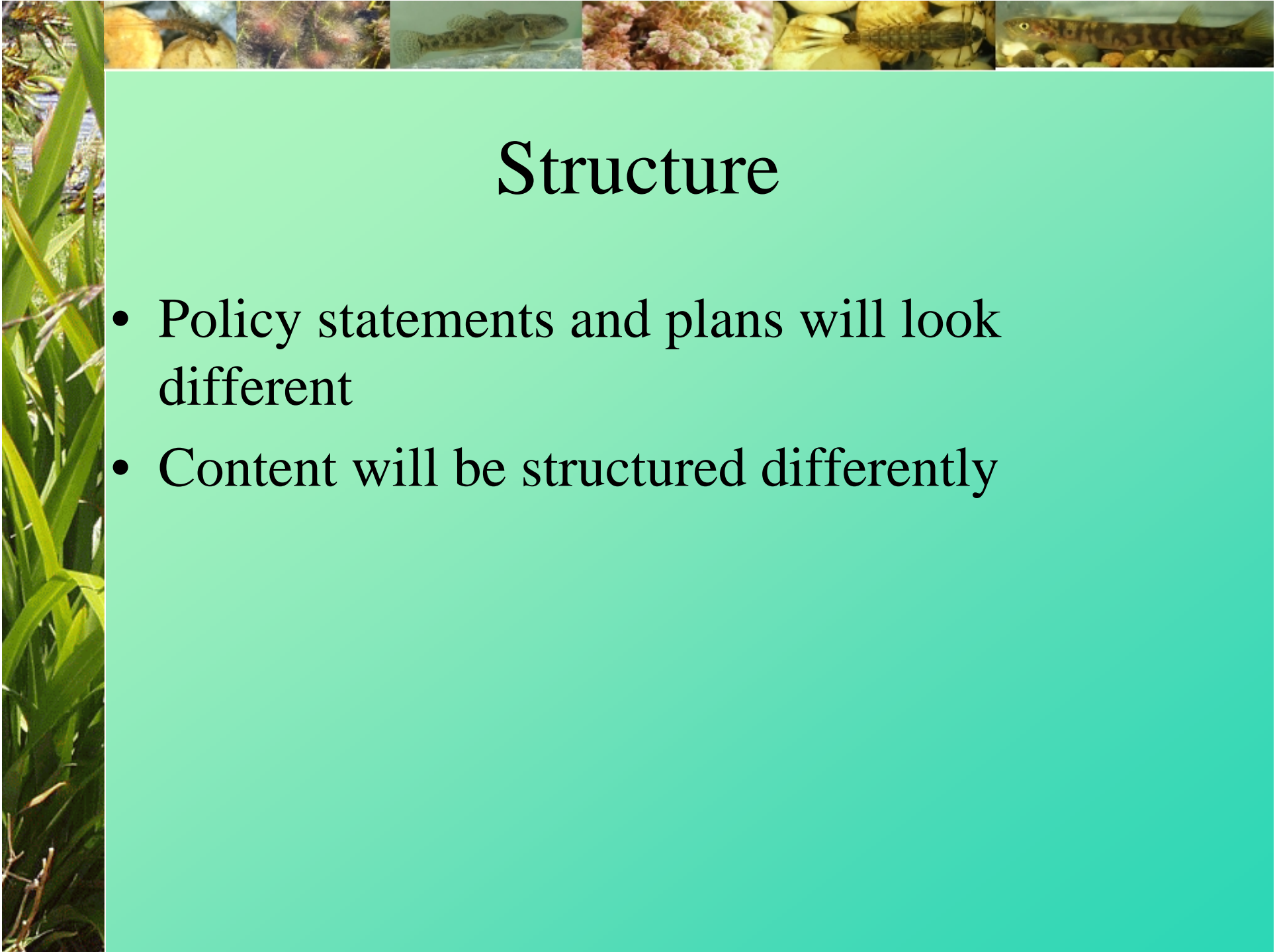
- Difficult to “turn back the clock”
- Land use
 - Existing use rights
 - Precedence
- Natural resource use
 - Can only review conditions during consent term
 - Difficult not to renew
 - Significant investment on basis of initial consents





So what will be different?

- Structure
- Plan-Do-Monitor-Review
- Iwi management plans
- (Legislative reform?)



Structure

- Policy statements and plans will look different
- Content will be structured differently



Structure - Opportunities

- More choice
- Streamlined plans – S67 and 75
 - Objectives, policies and rules
- Combined plans – S78A
 - Within a local authority (Horizons One Plan, Hawke's Bay RMP)
 - Between local authorities (Wairarapa District Plan)



Application to Marlborough

- Combined RPS, regional coastal plan, regional plan and district plan
- RPS provides policy direction
- Plan component focus on rules
- Joint planning with NCC and TDC?
- Encouraging Te Tau Ihu iwi to develop IMPs



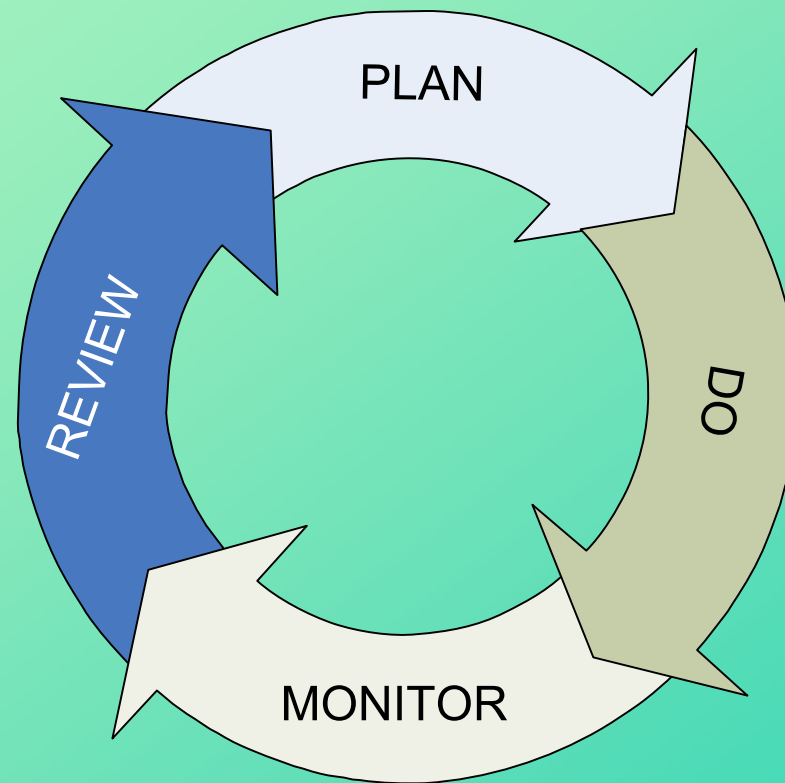
Structure - Advantages

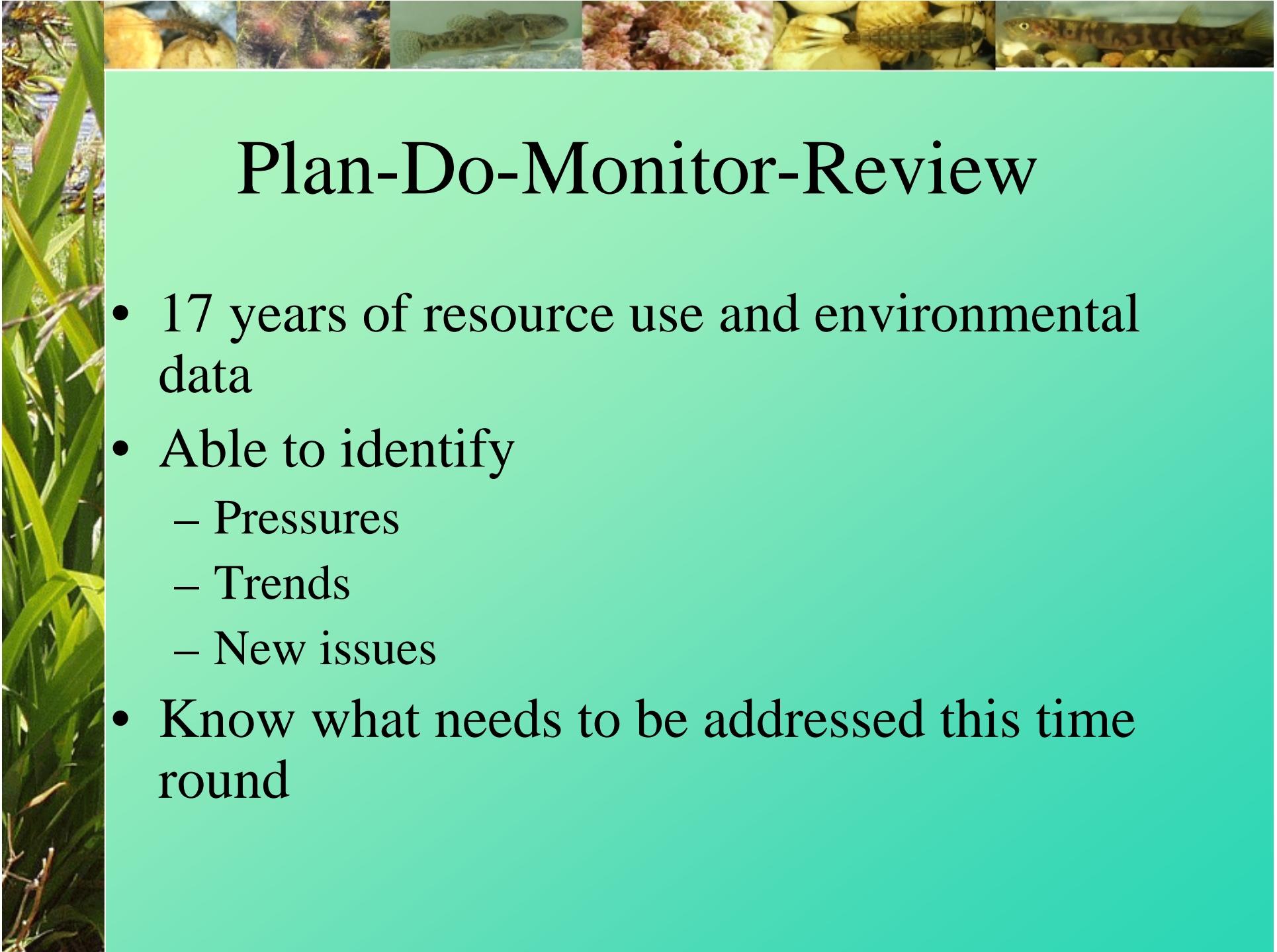
- Integration of resource management
 - Interaction between land use and natural resource use
 - A need for greater co-operation between regional councils and territorial authorities
- Consistency
- Clarity
- Portability
- Efficient use of available resources





Plan-Do-Monitor-Review





Plan-Do-Monitor-Review

- 17 years of resource use and environmental data
- Able to identify
 - Pressures
 - Trends
 - New issues
- Know what needs to be addressed this time round



Plan-Do-Monitor-Review

- Need to understand role policy statements and plans have made in shaping the environment
- Efficiency and effectiveness monitoring
- S35



Plan-Do-Monitor-Review

- Anticipated environmental results
- Not a restatement of objectives
- Environmental indicators
 - Identify appropriate parameters
 - Identify measurable parameters



Plan-Do-Monitor-Review

- AERs now optional for plans
- Monitoring strategies?
- Resource implementation
 - Link to LTCCP



Iwi Management Plans

- Treaty settlements progressing
- Iwi resourced to participate in resource management
- Greater development and use of IMPs
- Must take these into account – S61, 66, 68 and 74
- Iwi expectations



Summary

- Term “second generation” implies more than it actually delivers
- Similar content
- Look different
- Great opportunities for collaborative resource management
- Can we make production of third generation easier?

