

Treaty Settlement processes in the Waikato River catchment

Summary

Co-management Agreements

- Waikato-Tainui - Deed of Settlement 22 August 2008, Bill before House.
- Raukawa and Te Arawa hapu - Heads of Agreement, September 2008.
- Maniapoto Maori Trust Board – Agreement in Principle initialled, September 2008.

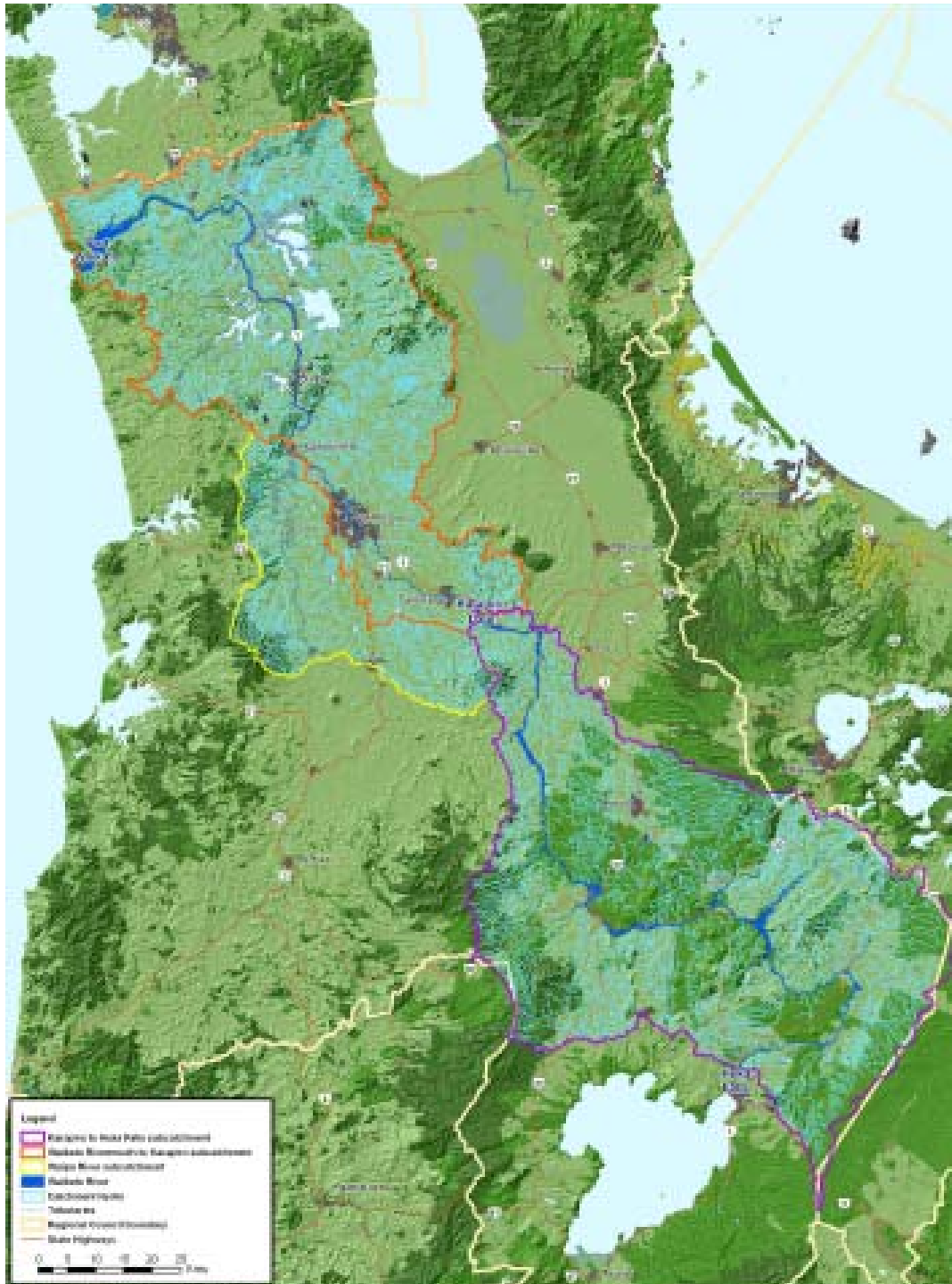
Purpose of Waikato- Tainui Settlement

- “Restoring and protecting the health and well-being of the Waikato River for (present and) future generations”.
- Co-management “includes:
 - the highest level of good faith engagement; and
 - consensus decision-making as a general rulewhile having regard to statutory frameworks and the mana whakahaere of Waikato-Tainui and other Waikato River iwi”.
- Mana whakahaere “refers to exercise of control, access to and management of the River”.

Provisions

- Additional statutory bodies
- Additional plans and accords
- Multiple points of engagement for resource management decisions
- New funding for “cleanup”

Guardians' Catchment



Statutory Board Catchment



Co-management (cont)

- **Guardians of the Waikato River.**
 - Membership 5/5, Crown (including EW) and River iwi.
 - Korowai.
 - Whole of catchment.
 - Promote and supervise implementation of Vision and Strategy.
- **Guardians Establishment Committee.**
 - Promote and supervise implementation of Vision and Strategy.
 - Oversee scoping study for clean up priorities of Waikato River.
 - Develop terms of reference for independent Clean Up Trust.

Co-management (cont)

- **Waikato River Statutory Board.**
 - Membership 5/5 (Waikato-Tainui and local government).
 - Assists Waikato-Tainui exercise mana whakahaere.
 - Ability to exercise devolved decision making powers.
- **Statutory Board Establishment Committee.**
 - Analysis of potential transfers completed March 2009.
 - Report prepared to be considered by local authorities.

Co-management documents

- **Vision and Strategy**
 - Prepared by Guardians Establishment Committee.
- **Integrated River Management Plan**
 - Jointly prepared between Waikato-Tainui and EW/DOC and Ministry of Fisheries.
- **Waikato-Tainui Environmental Plan**
 - Iwi management plan.

Waikato River Clean-Up Trust

- To be established on settlement date and executed by Crown and Waikato-Tainui as settlors.
- GEC to determine clean up priorities.
- Sum of \$7m to be settled on settlement date.
- Further sums of \$7m each year for 29 years.
- Scoping study for clean-up: upon receipt, Crown will consider whether any further contribution will be made.

Funding

- **Clean Up fund.**
 - \$210 million.
 - Scoping study to be completed – outcome to determine whether further contributions required.
- **Funding for entities and establishment committees.**
 - Crown will fund the costs of operation.

Review Panel

- Assessed efficiency and effectiveness of co-management arrangements for the Waikato River catchment
- Recommended Guardians given more “teeth” and that statutory boards not established