



Presentation to the LGNZ Conference – 29 July 2008

GROWING COMMUNITIES THROUGH DIGITAL TECHNOLOGIES

Roger Blakeley, Chief Executive, Porirua City Council



PORIRUA CITY - IT'S AMAZING

Digital Porirua: Our Vision 2015



A city of well connected communities
where taking part in new technologies is
easy.

PORIRUA CITY - IT'S AMAZING



Porirua City Today

Population 50,700

Economic growth

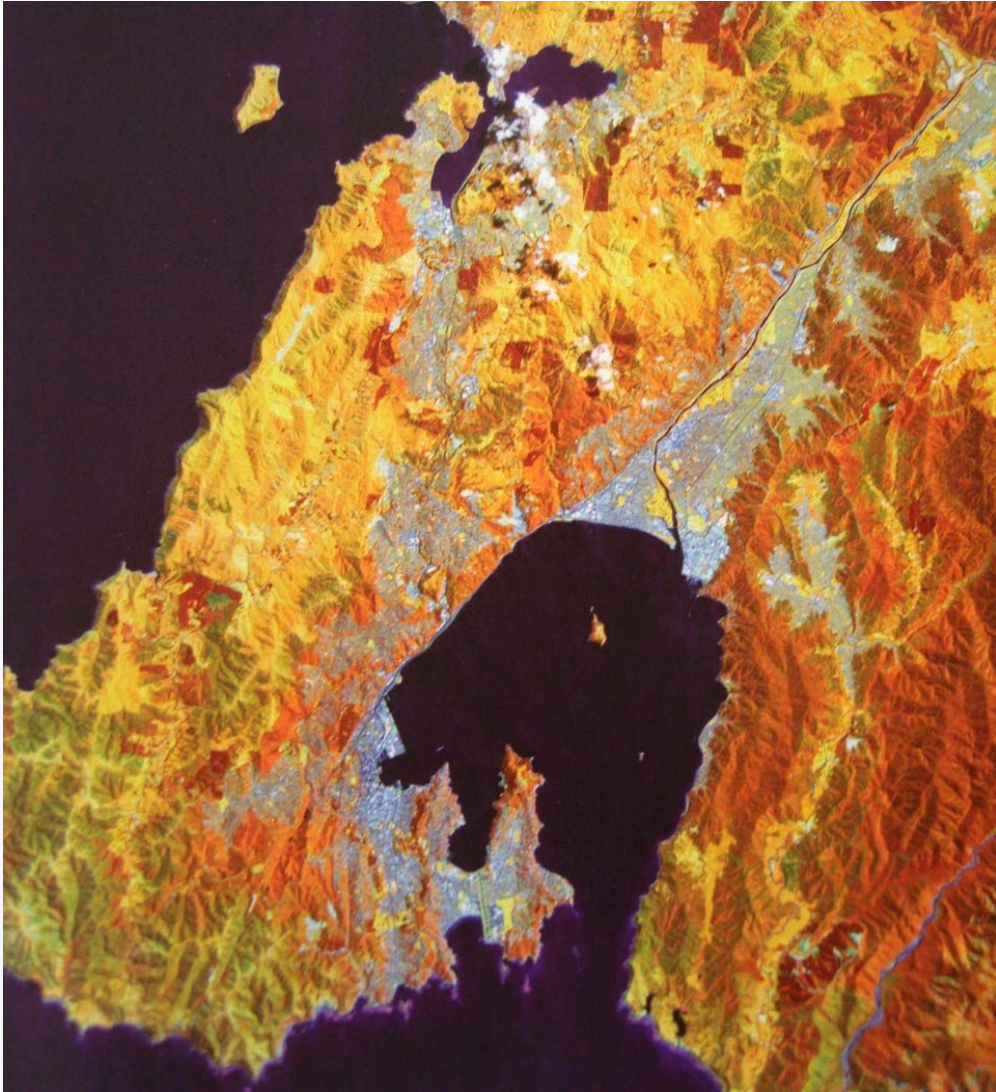
- Fastest GDP growth out of 72 TLAs 12.7% 2006 BERL.
- Second fastest business unit growth out of 72 TLAs 2007 BERL.

Quality of Life

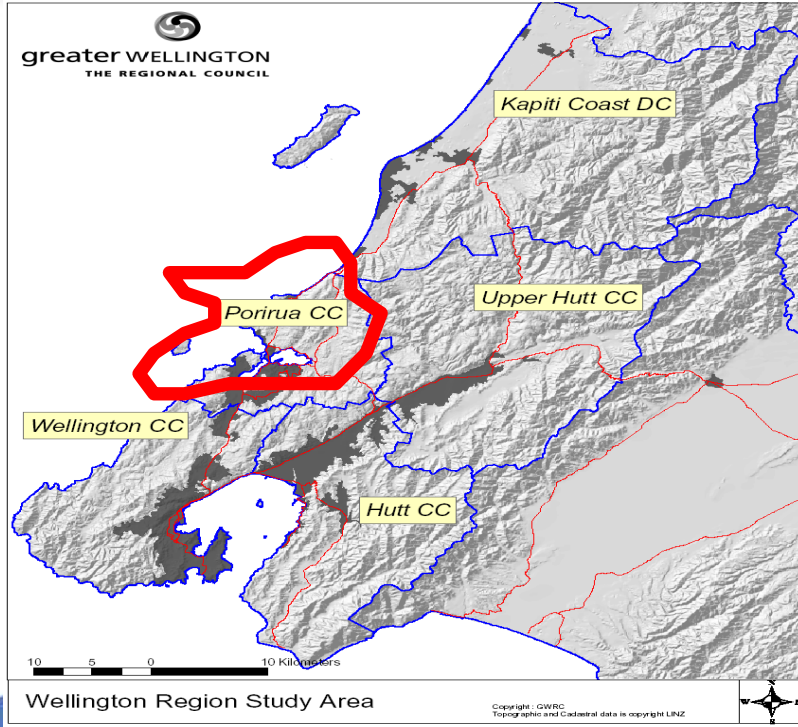
- Third equal out of 12 cities, Quality of Life Survey 2007.

PORIRUA CITY - IT'S AMAZING

PORIRUA TODAY



Regional Context
Porirua Population: 50,700
Wellington Region: 464,700



PORIRUA CITY - IT'S AMAZING

Digital Porirua – The Story So Far

- 2005 – Digital Forum established to create Digital Porirua Framework
- 2005 - Porirua, in partnership with Upper Hutt, Hutt City and private investors establishes Smartlinx3
- 2006 – Successful application for central government funding (Community Partnership Fund) to establish a baseline of digital assets and community needs
- 2007 – Digital Asset Mapping Project completed

Digital Porirua – The Story So Far ... cont'd

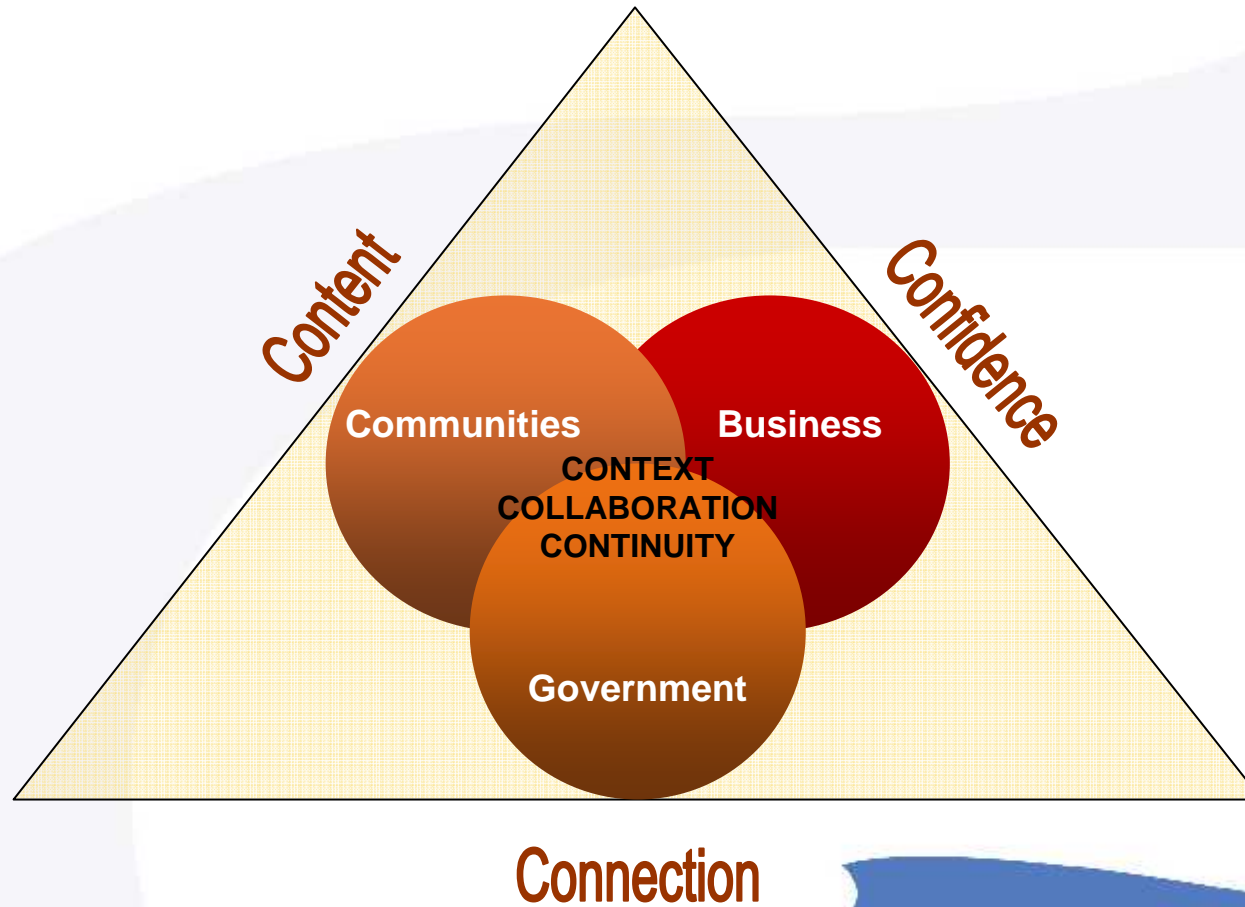
- **2007 – Participated with partners in securing Government funding (Broadband Challenge Fund) to accelerate rollout of Smartlinx3 network.**
- **2007 – Successful application to CPF for funding to create the Digital Porirua Vision.**
- **2008 – Digital Porirua Project commenced.**
- **2008 – In partnership with e-Learning, Porirua, HP grant to establish computer club network**

Digital Porirua: Our vision 2015

a city of well connected communities where taking part in new technologies is easy

- *A robust broadband infrastructure*
- *a comprehensive shared knowledge base*
- *an awareness programme of the benefits and possibilities of ICT*
- *a high level of digital confidence*
- *an extensive collection of useful content*
- *an increase in the wealth of the city*
- *a long term sustainability plan*

Digital Porirua: Our Strategic View



PORIRUA CITY - IT'S AMAZING

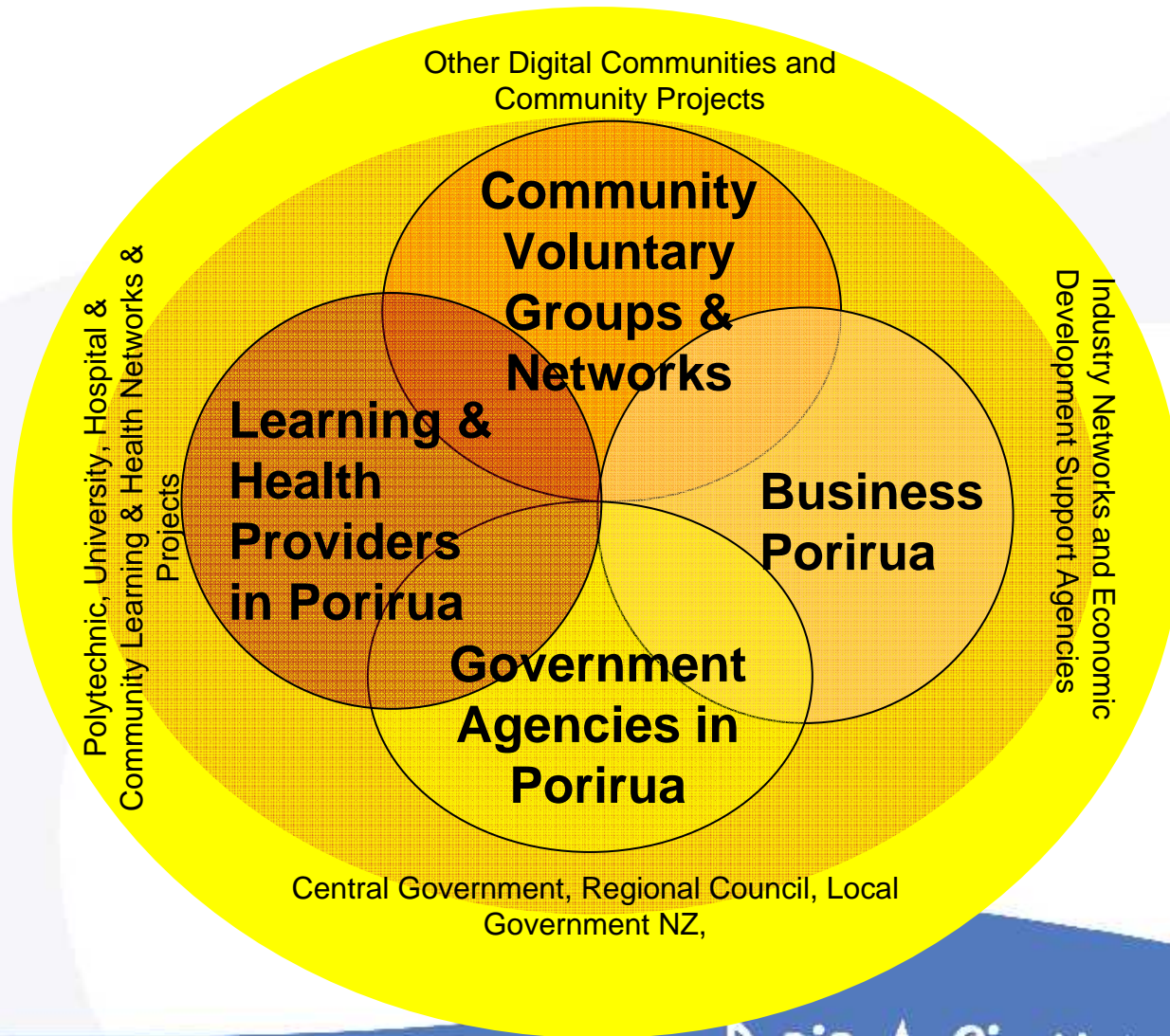
Our Strategic View

- We believe that the well planned and implemented use of ICT can increase productivity in our businesses, help build social cohesion, enable cross sector collaboration and help to realise the aspirations of our people.
- Reflects and expands on the Government's 'Digital Strategy: Creating Our Digital Future'.
- Enacting Strategy at two levels – the Network Level and the Community Level

Network Level

- Porirua is a founding investor in Smartlinx3.
- Current network embraces CBD, limited excursions into the wider urban area.
- Additional capital secured two for one matching Government's Broadband Challenge Fund.
- 2008 fibre network stocktake highlights gaps and opportunities.

Building Through Network: The Forum



PORIRUA CITY - IT'S AMAZING

Asset Mapping – The Objectives

Asset Mapping: Locating and understanding the opportunities, establishing a base line. GIS mapped.

People: Who understand the benefits
Help others get the benefits
Use technologies

Places: (which provide people with):
Access to ICT
Skills and knowledge they need
Opportunities to develop themselves, their families, their communities.

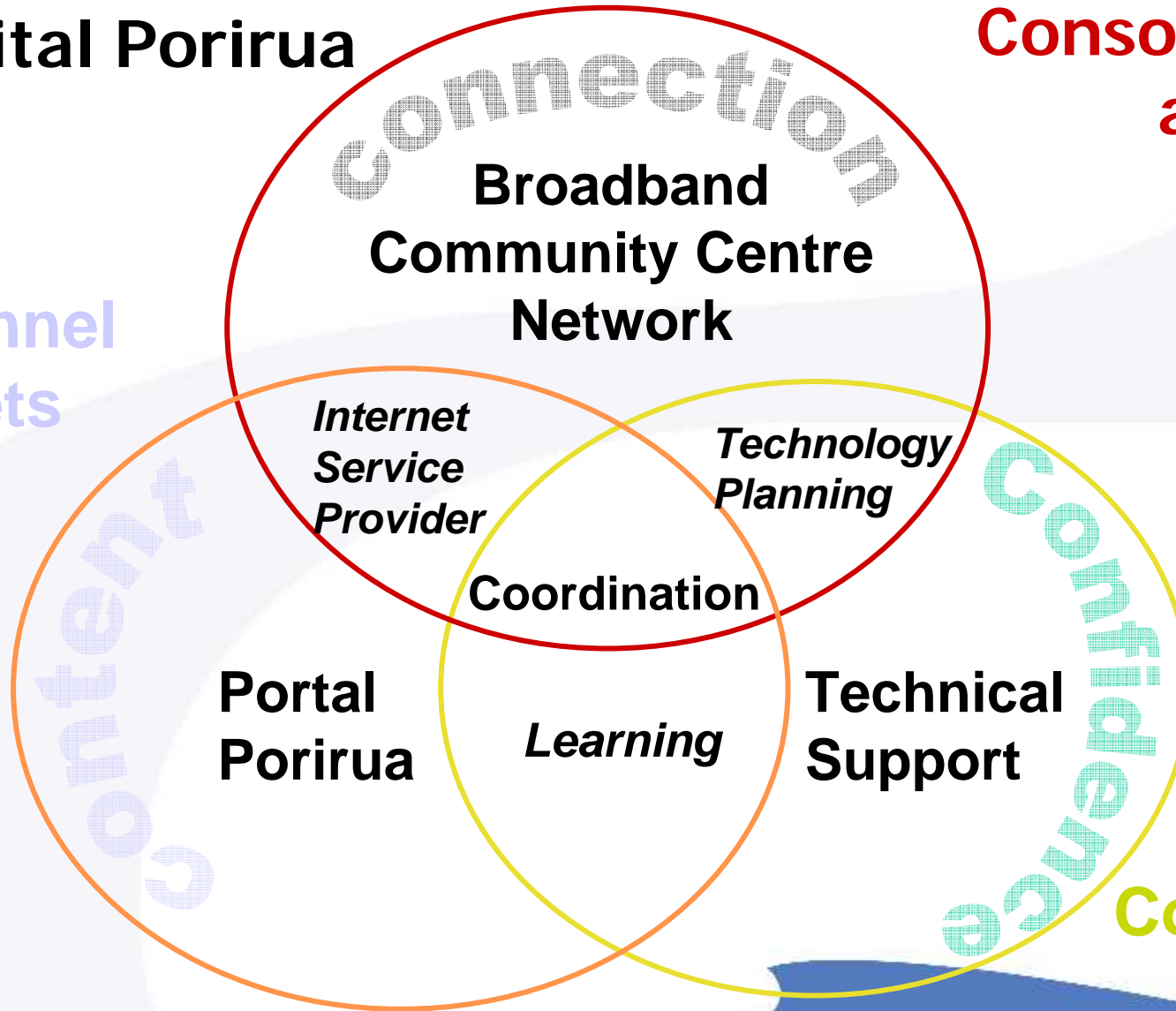
Spaces: Where people feel safe to explore new ideas
There is the equipment to do it.
They can connect to the internet.

The Journey

Digital Porirua

Consolidate
assets

Channel
assets



Configure
assets

PORIRUA CITY - IT'S AMAZING

Digital Porirua Executive Board

- Leadership
- Facilitating Relationships
- Influencing and Supporting Projects
- Aggregating Demand
- Bridge to Community Groups

**STRONG PARTNERSHIPS WITH
COMMUNITY GROUPS ARE CRITICAL**

Digital Porirua: Implementing the Vision

The second phase of the project is about building on the assets and services already in place and working with people to help get them what they need.

This work is again being supported through Government's Community Partnership Fund.

The Digital Porirua Project aims establish Porirua as a 'Digital City'.

Four project strands:

- **Community internet gateway (Portal Porirua)**
 - DotNetNuke – self generated web presence; blogs; chats; databases (culture, stories) GIS

Digital Porirua: Implementing the Vision...cont'd

- **A network of Community Access Points**
 - Supported access to broadband enabled internet points.
 - Centred on existing community centres (church groups, community centres, libraries etc).
 - 10 minutes walking distance.
- **Technical Support Network**
 - An effective and affordable technical support structure
 - TechWorx: a new community managed enterprise.
- **Learning**
 - Development of learning (ICT confidence) and educational opportunities.

Computer Clubhouse

Opportunity possible because of the Strategy work – required to open within three months of application.

Our *e-Learning Porirua* partnership

An HP Education Fund grant “creation of safe learning environments through access to technology within an area where it would make a difference”