



Widening the
net...including
the excluded
in local
government

Dr Judy McGregor
EEO Commissioner

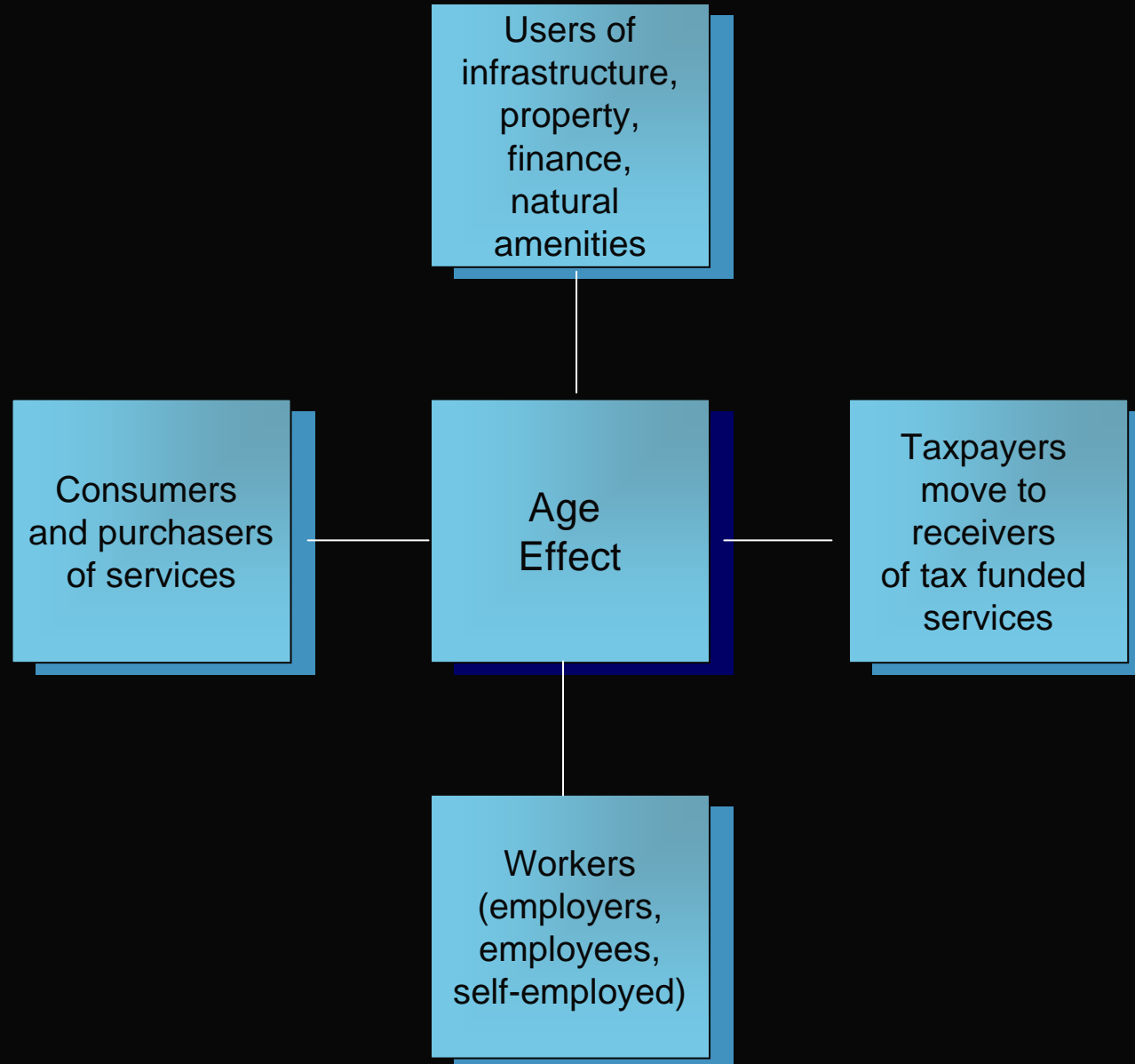


People change - what the address covers

- The age effect – will we have to work forever?
- Sex and power in local government
- Squeaky wheels and silent majorities
- The role of local government as a “good” employer.



Regional economies



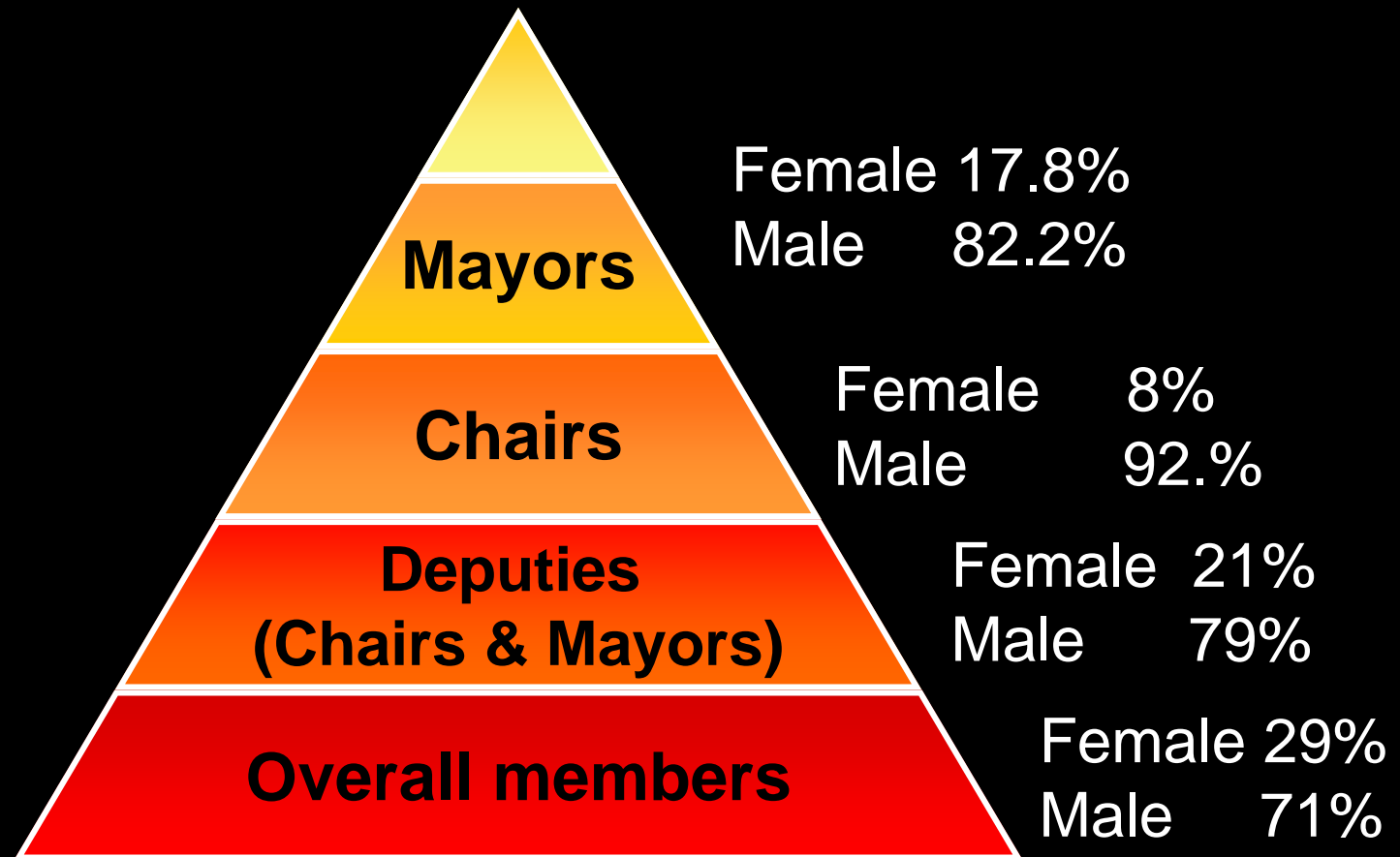
New Zealand Census
of Women's Participation

2008

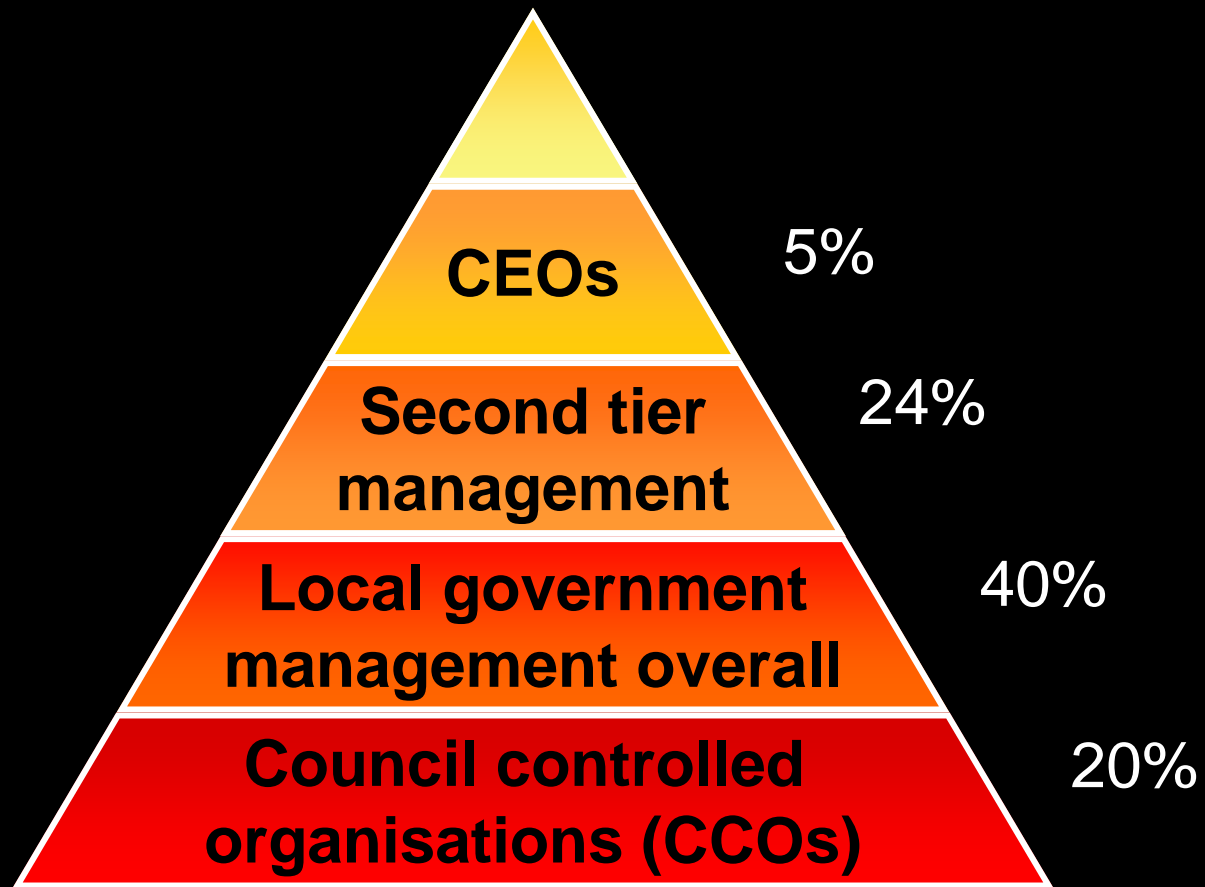


Human Rights
Commission
Te Kaitiaki Take Kōwhiri

Representation – local government



Women in local government







LG Women's Network?

- Actively promote local government
- Workshops re campaigning skills
- Mentorship for new members
- Networking opportunities





BRAIN GAIN

Migrant workers in New Zealand




Human Rights
Commission
Or Kaitiaki Take Kōwhiri

Migrant workers





www.neon.org.nz

